

The Arctic Today - and Tomorrow

Lone Dirckinck-Holmfeld
Dean, The Faculty of the Humanities



About Centre for Innovation and Research in Culture and Learning in the Arctic

Welcome to the CIRCLA homepage!

The Centre for Innovation and Research in Culture and Learning in the Arctic (CIRCLA) is a cross-disciplinary, cross-faculty centre, based at the Department of Culture and Global Studies. Its purpose is to communicate, organize and support the development of Arctic-related research at Aalborg University.

CIRCLA's geographical area of interest is the Circumpolar North (incl. Greenland, the northern parts of Scandinavia, Canada, Alaska and Russia, the North Atlantic and the Polar Sea). As regards research, the field of interest is defined broadly as Arctic Studies, but particular attention is given to research in the human sciences within the areas of social and cultural analysis, communication, culture-driven innovation, sustainable development (including tourism and management of natural and cultural heritage), humanities informatics and learning.

- HOME
- MEMBERS OF THE DEVELOPMENT COMMITTEE
- ASSOCIATED RESEARCHERS
- COOPERATION
- ACTIVITIES
- LINKS

News at CIRCLA

RESEARCH SEMINAR, MAY 2012

CIRCLA AT IPY2012 AND ASSW IN MONTRE...

[Read more news...](#)

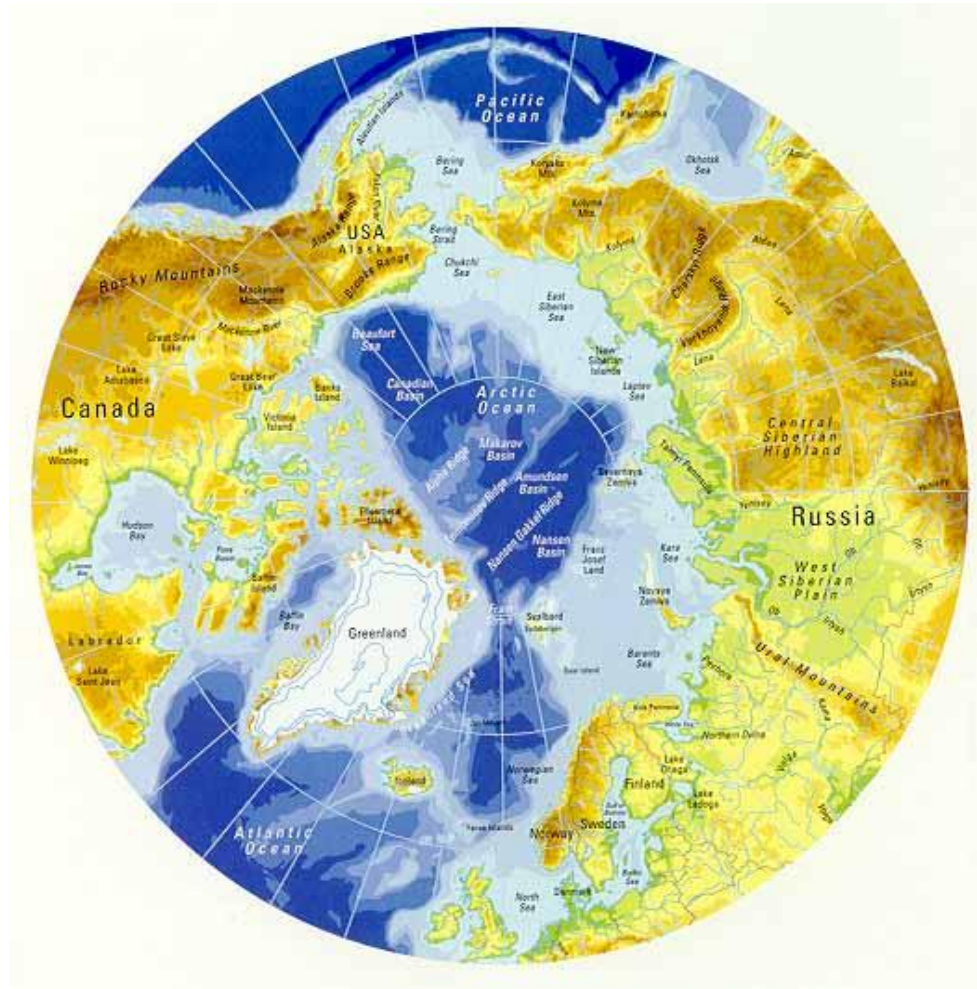
Upcoming events

THE ARTIC TODAY - AND TOMORROW

[See all events...](#)



The Circumpolar North





“It is our common objective that the Arctic and its current potential must be developed to promote sustainable growth and social sustainability. This development must take place firstly to the benefit of the inhabitants of the Arctic and go hand in hand in safeguarding the Arctic’s environment.

With new opportunities come new challenges. The Arctic has to be managed internationally on the basis of international principles of law to ensure a peaceful, secure and collaborative Arctic.

The purpose of this strategy is, on the basis of an already strong engagement in the Arctic, to reinforce the foundation for appropriate cooperation on the many new opportunities and challenges that the Arctic is facing”

(The Government of Greenland, Kuupik Kleist; the Government of the Faroe Islands, Kaj Leo Holm Johannesen and the Government of Denmark, Lene Espersen, p. 7)

WORKING GROUPS

SOCIAL & HUMAN

Scientific Foci

Members

Activities

Publications

TOR



Introduction

The scientific scope of the Social und Human Sciences Working Group (WG) shall include all aspects of social sciences and humanities research in the Arctic, as well as their connections with other IASC Working Groups. The actual work of the Social & Human Sciences Sciences WG will be determined by a dynamic list of scientific focus areas.

The geographic scope of the Social und Human Sciences Working Group shall be the Arctic as defined in the map accompanying the Arctic Human Development Report (AHDR). The geographic scope can be extended south where it is appropriate for an understanding of arctic social and human processes.

CONTACT: [Mare Pit I WG Secretary](#)

Working Groups

Action Groups

Advisory Groups